
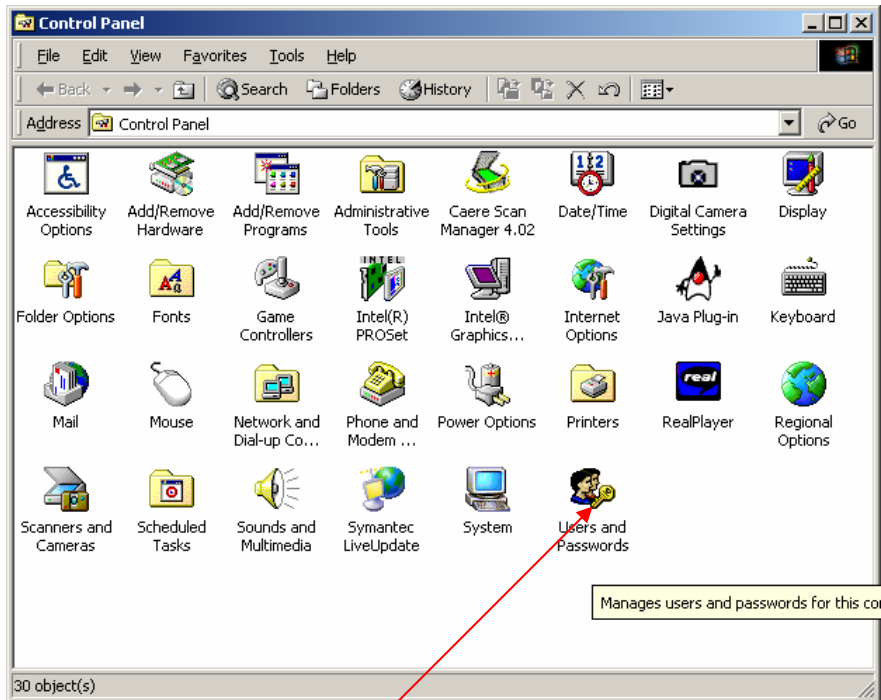
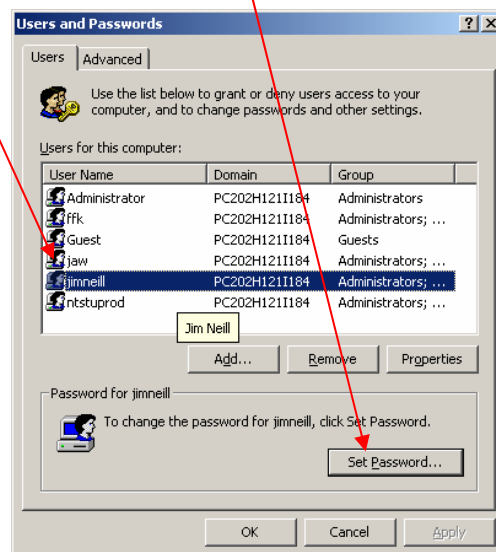


Changing your Network Password Windows 2000

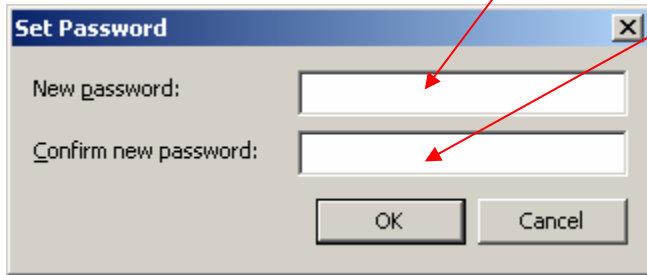
- 1) Select the “Start” button  and then select the “Settings” button .
- 2) Next select the “Control Panel” button.



- 3) Next Select the “Users and Passwords” button.
- 4) Next Select your name, and then the “Set Password...” button.



5) Then enter your “old Password” and then your “new password”. Enter the new one again to verify. Then select OK.



The image shows a standard Windows-style dialog box titled "Set Password". It has a blue title bar with a close button (X) in the top right corner. The dialog contains two text input fields. The first field is labeled "New password:" and the second is labeled "Confirm new password:". Below the input fields are two buttons: "OK" and "Cancel". Two red arrows originate from the text above: one points to the first input field and the other points to the second input field.

6) The next time you log in use the new network password.